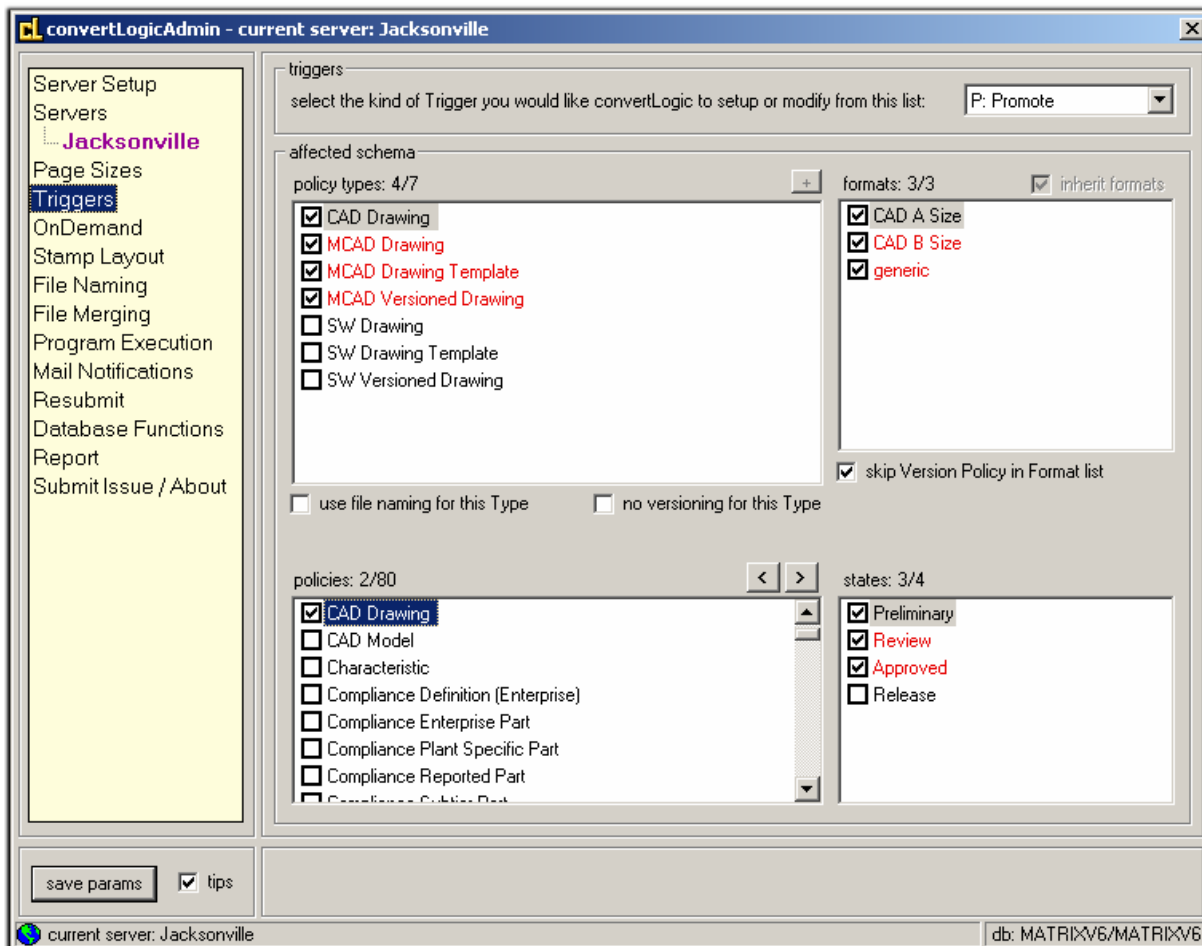


KEY BENEFITS

- **Automated PDF/TIFF Rendering** – convert hundreds of file types including CAD and Office
- **Metadata Stamping** – stamp virtually any metadata onto rendered files
- **Windows Service** – automatically restarts without admin interaction
- **Regulatory Compliance** – no user interface and complete admin control enables compliance
- **Point-n-Click** – admin utility for setting parameters requires no programming
- **FCS Capable** – supports multi-site installations via Site definitions in Matrix
- **CDM Compliant** – uses Common Document Model
- **Bulk Data Conversion** – bulk processing of legacy data via simple text files
- **Program Execution** – executes a specified program after each conversion (Optional)
- **File Renaming** – automatically renames converted files based on admin template
- **Strict Privileges** – applies settings in addition to access privileges set within Matrix
- **File Synchronization** – ensures that converted files and native files are in sync
- **Fault Notification** – uses Icon Mail and/or Email notifications for admins and users
- **Process Logging** – advanced logging of rendering process to file



convertLogicAdmin triggers pane

DESCRIPTION

convertLogic is fully integrated with Dassault Systèmes ENOVIA MatrixOne applications. It provides seamless, automated PDF conversion and metadata stamping of files from your Matrix database. No user interaction is required.

convertLogic consists of 3 components:

1. convertLogic (Server) – runs as a true Windows Service. **convertLogic** periodically queries Matrix (administrator controlled) to automatically process each file that is queued for rendering. The server application checks files out of Matrix and checks in the successfully converted files. Numerous other functions are built in including success/failure notification, automatic queue preservation and automated shutdown/restart of the conversion engine.

2. convertLogicAdmin – allows full control of every parameter required for **convertLogic**, plus control of the file queue. The intuitive interface is clearly presented on tabs for each major functional group:

- File queue management
- Conversion parameters
- Setup and modification of triggers
- Audit trail for all rendering (success and error logging)
- Site management for multiple **convertLogic** installations
- Metadata stamp layout

3. Matrix Triggers – automatically created/modified from within **convertLogicAdmin**.

Up to 12 different trigger types can be managed providing robust conversion and metadata stamping options. Since **convertLogic** is trigger based, it works with all Dassault Systèmes ENOVIA MatrixOne versions.

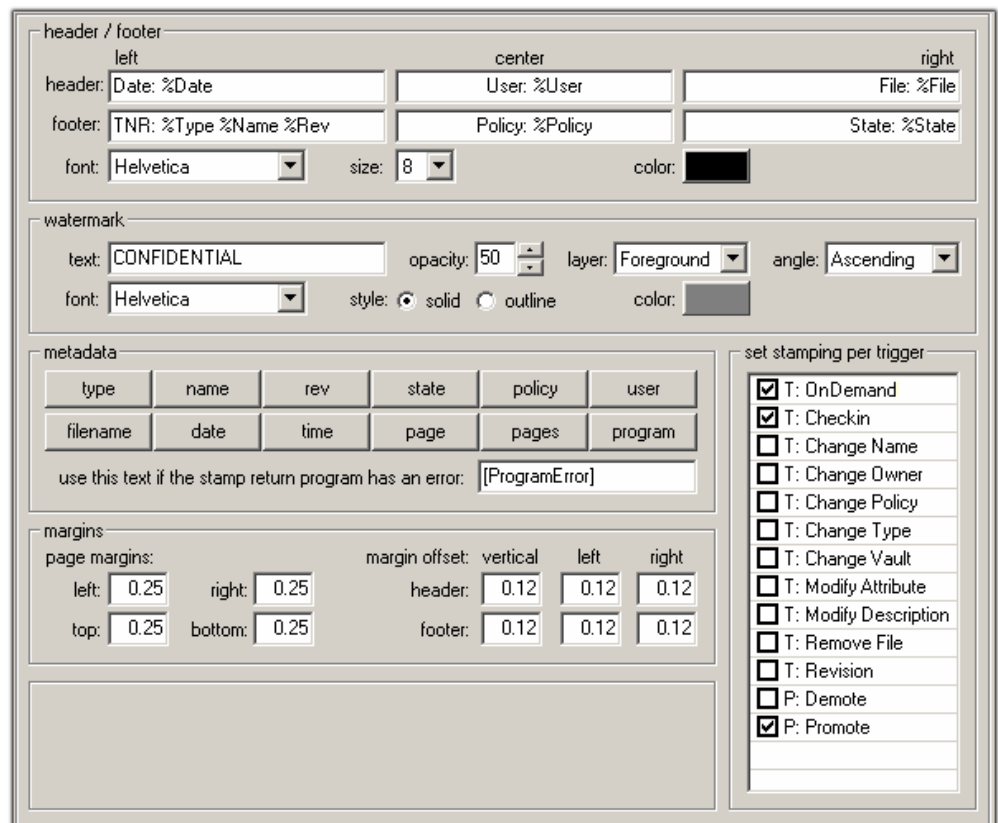
ADDITIONAL BENEFITS

convertLogic (Server)

- File logging of conversion process (continuous or daily)
- Mail notifications for success or failure
- Mail notifications to Admins for service interruptions
- Automatic shutdown of Express upon critical errors
- Automatic queue retention upon critical error (FIFO order)
- File-based bulk conversions
- Remote monitoring using free application CLMonitor
- Encrypted password protection

convertLogicAdmin

- Automatic installation of schema elements
- Self-diagnostic and repair upon startup
- Automatic tracking of upcoming conversions
- Direct viewing of conversion log files
- Start/Stop convertLogic Windows Service
- Queue control – remove any or all queued files
- Point-n-click interface for setting convertLogic parameters



The screenshot shows the 'stamp layout pane detail' in convertLogicAdmin. It is divided into several sections:

- header / footer:** A table with columns for 'left', 'center', and 'right'. The header row contains 'Date: %Date', 'User: %User', and 'File: %File'. The footer row contains 'TNR: %Type %Name %Rev', 'Policy: %Policy', and 'State: %State'. Below this is a font selection (Helvetica), size (8), and color (black) dropdown.
- watermark:** Text field set to 'CONFIDENTIAL', opacity (50), layer (Foreground), and angle (Ascending). Font is Helvetica, style is solid, and color is grey.
- metadata:** A table with columns: type, name, rev, state, policy, user, filename, date, time, page, pages, program. Below it is a text field for error handling: 'use this text if the stamp return program has an error: [ProgramError]'.
- margins:** A table for page margins and offsets. Page margins: left: 0.25, right: 0.25, top: 0.25, bottom: 0.25. Margin offset: vertical, header: 0.12, left: 0.12, right: 0.12, footer: 0.12, left: 0.12, right: 0.12.
- set stamping per trigger:** A list of triggers with checkboxes:
 - T: OnDemand
 - T: Checkin
 - T: Change Name
 - T: Change Owner
 - T: Change Policy
 - T: Change Type
 - T: Change Vault
 - T: Modify Attribute
 - T: Modify Description
 - T: Remove File
 - T: Revision
 - P: Demote
 - P: Promote

convertLogicAdmin stamp layout pane detail

For more information, a **convertLogic demo** is available on our website at: CoastalLogic.com/convert.html