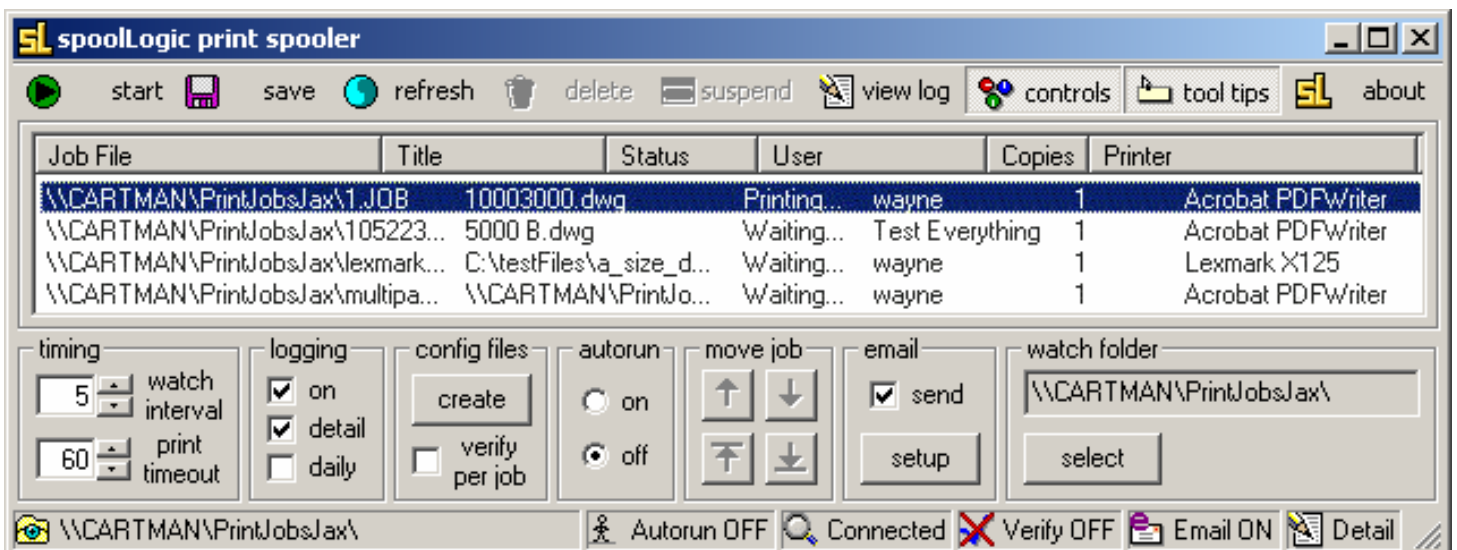


SL spoolLogic

Network Print Spooling with ISO Banners and Watermark

KEY FEATURES

- Server based print spooler
- Uses Informative Graphics' Myriad to process over 250 file types
- Runs as true NT Service – automatically restarts without administrator interaction
- Built-in fault monitoring and clean up
- 12 zones for ISO banners plus watermark
- Enhanced file processing – print multiple files at once
- Page numbering across multiple documents
- Multiple controls for document process timing
- Email notification of critical errors (with file attachment)
- Process logging – 3 levels
- Enhanced visual interface, including log file viewer
- Compatible with Windows 2000, XP and Server 2003
- Database direct printing, such as Documentum (with Myriad integration)
- Drop-in replacement for Informative Graphics' MPS



The main window expanded to show the controls

DESCRIPTION

spoolLogic is a server based application which can be used as the work horse print engine for your batch printing and metadata watermarking needs.

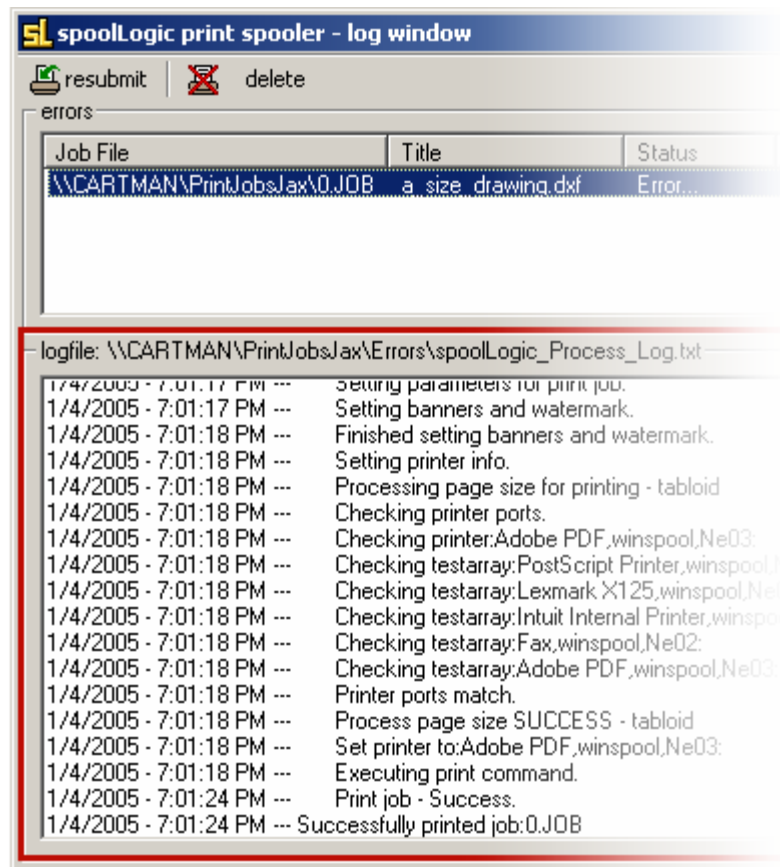
Control over the print parameters is handled via a simple text-based “job” file. Since the job file is just text, you can create it virtually any way you can think of. Use your own method from any file or database system such as Documentum, Open Text, etc. then pass the job files off to **spoolLogic** for processing. (Our product **printLogic** is an example of a PLM integration with MatrixOne, which uses **spoolLogic** as its print spooler and watermarking mechanism.)

spoolLogic works directly with Informative Graphics’ Myriad Server Edition as it’s print processor so it can print over 250 file types. Take advantage of Database Direct printing through Myriad integrations (such as Documentum).

Perhaps most importantly, **spoolLogic** is designed to be used as a Service so that it can truly run unattended.

ADDITIONAL FEATURES

- Timing control for watched folder
- Timing control for print status
- Continuous or daily log files
- Autorun at startup option
- Reposition jobs within the print queue
- Delete jobs within the print queue
- Suspend jobs within the print queue
- Resubmit or delete error causing jobs
- Automatic UNC path conversion and Network capability
- Enhanced File Processing allowing multiple files to be printed at once
- Auto-save of window parameters and basic settings
- ISO banners in 12 zones, with multiple lines
- Automatically scaled watermark



Partial view of the spoolLogic log window

For more information, a **spoolLogic demo** is available on our website: CoastalLogic.com/spool.html