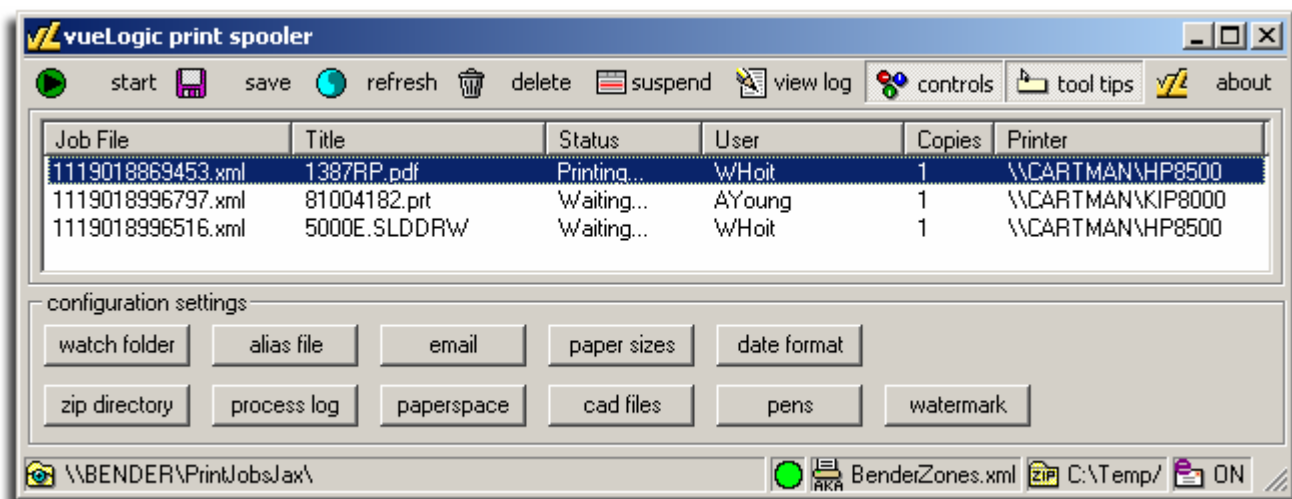


Network Print Spooling with ISO Banners and Watermark

KEY FEATURES

- Server based print spooler
- Embeds AutoVue from Cimmetry Systems to process over 450 file types
- Instancing - Can be run multiple times on a single machine, maintaining completely distinct processing parameters (Each "instance" requires a license)
- Runs as a true Service—automatically restarts without administrator interaction
- Built-in fault monitoring and clean up
- Printer and Page Size aliasing
- AutoSize - Automatic paper size selection
- AutoRotate – Automatically selects “best fit” paper rotation
- 12 zones for ISO Banners plus Watermark
- Send files to Printer or Zip Archive
- Email notification of critical errors (with file attachment)
- Process logging—4 levels
- Remote monitoring using free application CLMonitor
- Compatible with Windows 2000, XP and Server 2003
- ActiveX COM and Java Class APIs for creating XML job tickets



The main window expanded to show the controls

DESCRIPTION

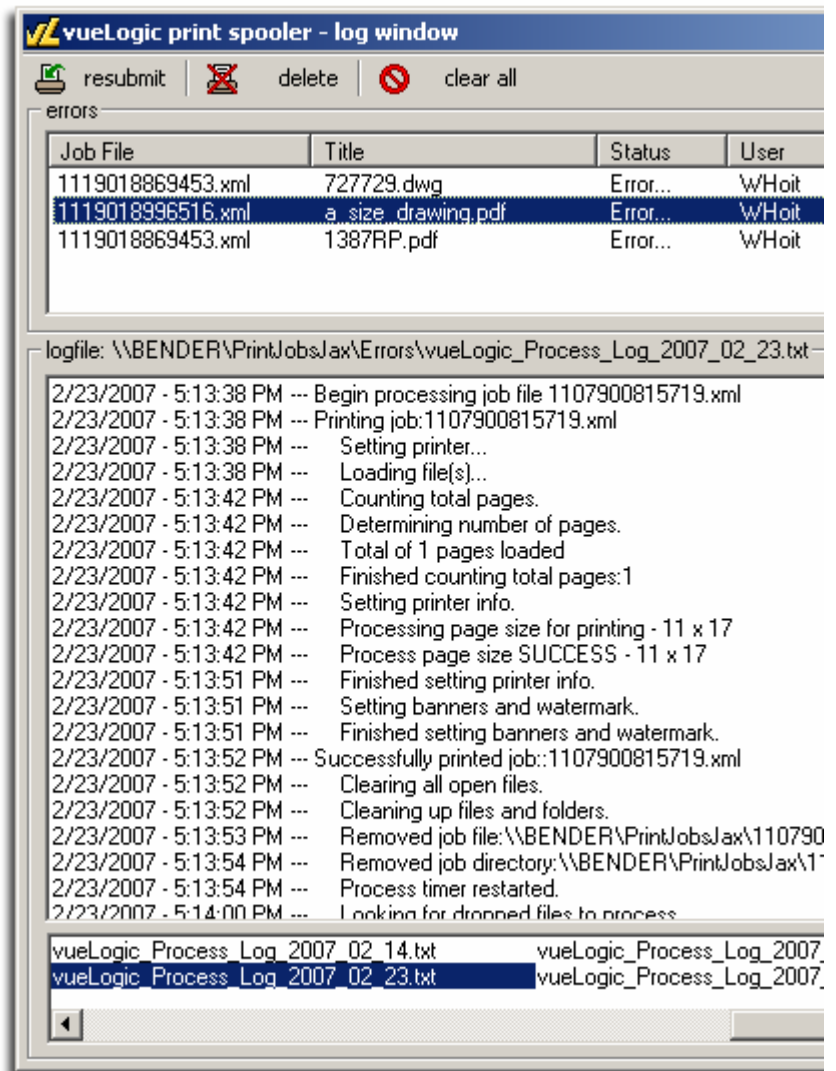
vueLogic is a server based application, which can be used as the work horse print engine for your batch printing and metadata watermarking needs. With *AutoVue Electro-Mechanical Professional* from Cimmetry Systems embedded, **vueLogic** can print over 450 file types.

Control over the print parameters is handled via a simple XML job ticket. Since the job ticket is plain text, you can create it virtually any way you can think of. Use your own method from any file or database system such as Documentum, Open Text, etc., or use our free ActiveX COM or Java Class, then pass the job tickets to **vueLogic** for processing. You can also contact us about creating a custom integration. (Our commercial product, **printLogic** is a PLM integration with Enovia MatrixOne, which uses **vueLogic** as its print spooler and watermarking mechanism.)

Perhaps most importantly, **vueLogic** is designed to be used as a Service so that it can truly run unattended.

ADDITIONAL FEATURES

- *Packetized printing—combines multiple files into a single print job*
- *Summary Page—report of print job including metadata*
- *Process Log Management—by size, date and quantity*
- *Automatic FIFO printing*
- *Reposition jobs within the print queue*
- *Delete/Suspend jobs within the print queue*
- *Resubmit/Delete error causing jobs*
- *Automatic UNC path conversion and Network capability*
- *Enhanced File Processing allowing multiple files to be printed within the same job*
- *Auto-save of window parameters and basic settings*
- *ISO Banners in 12 zones, with multiple lines*
- *Automatically scaled watermark*



Partial view of the vueLogic log window

For more information, a **vueLogic demo** is available on our website: CoastalLogic.com/vue.html